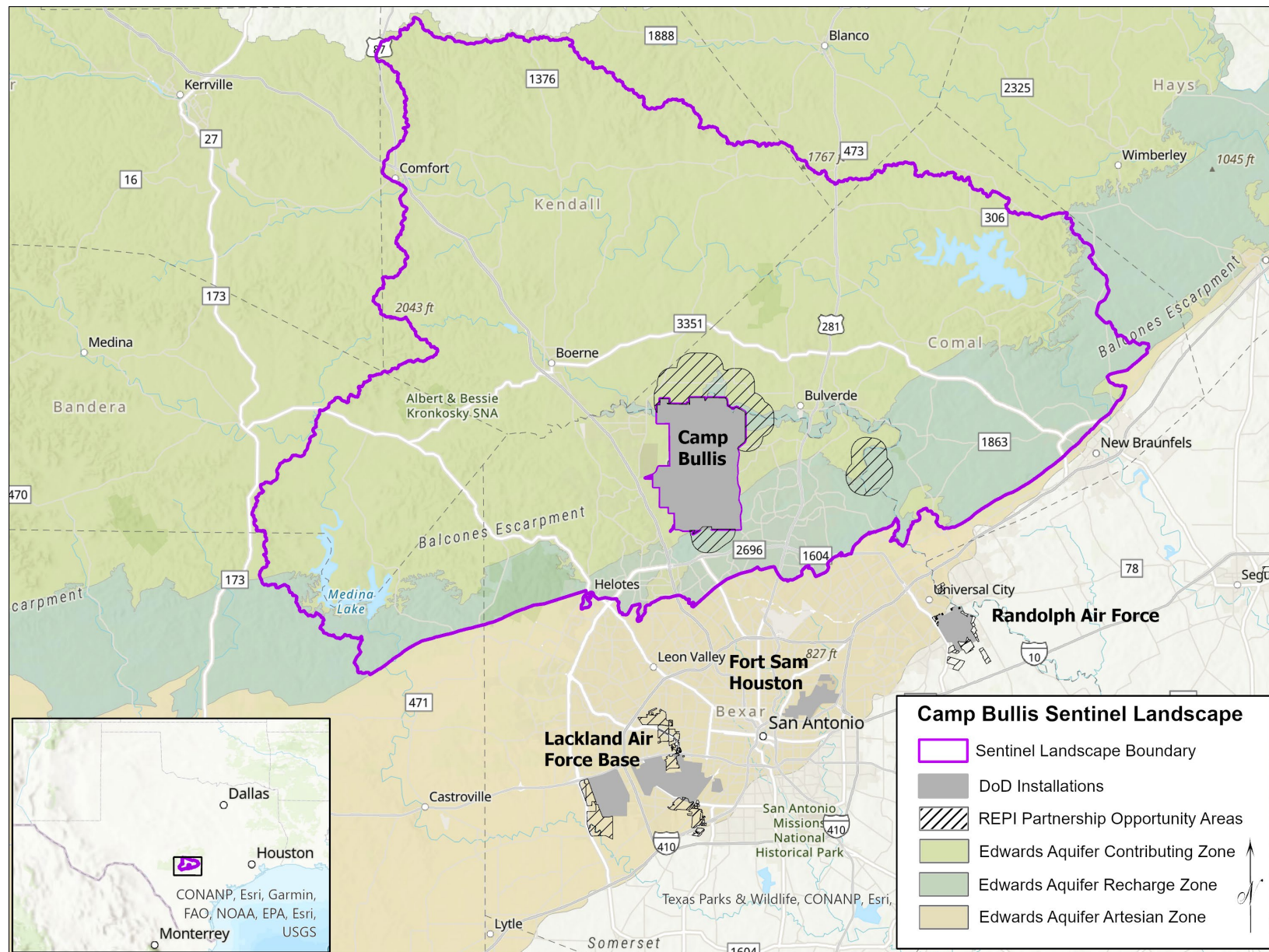


CAMP BULLIS SENTINEL LANDSCAPE

DANIEL
OPPENHEIMER

TAGD SUMMIT
31 AUGUST 2022



HILL COUNTRY ALLIANCE

Conserving the spring-fed streams, heritage ranch lands, spectacular beauty and culture of the Texas Hill Country for the benefit of future generations.

www.hillcountryalliance.org



What is a Sentinel Landscape?

A program founded by the US Departments of Defense, Agriculture, and Interior to:

- Strengthen military readiness &
- Conserve natural and working lands around military bases

Photo Source: <https://api.army.mil/>





Joint Base San Antonio – Camp Bullis
Est. 1906

How are we doing the work?

Seven Working Committees

1. **Watershed Protection** – Edwards Aquifer Authority
2. **Night Sky Preservation** – Hill Country Alliance
3. **Soil Health & Infiltration** – Greater Edwards Aquifer Alliance
4. **GIS Data & Mapping** – Texas A&M Natural Resources Institute
5. **Habitat Enhancement** – JBSA Installation Support, Air Force Civil Engineer Center
6. **Landowner Outreach** – HCA & Texas Wildlife Association
7. **Government Relations** – Alamo Area Council of Governments



Who Comprises the CBSL Partnership?



Federal Partners

- U.S. Department of Agriculture — Natural Resources Conservation Service
- U.S. Department of Defense — Joint Base San Antonio, Camp Stanley, USACE, AFCEC, & Army REOO
- U.S. Department of Interior – Fish & Wildlife Service, NPS RTCA, and USGS
- Federal Emergency Management Agency

State Partners

- Texas A&M University – Natural Resources Institute
- Texas Division of Emergency Management
- Texas Military Department
- Texas Military Preparedness Commission
- Texas Parks and Wildlife Department
- Texas State Soil & Water Conservation Board
- Texas State University – Meadows Center for Water & the Environment
- University of Oklahoma
- University of Texas – San Antonio

Local & Regional Partners

- Alamo Area Council of Governments
- Bandera County River Authority & Groundwater District
- City of San Antonio
- Cow Creek Groundwater Conservation District
- Edwards Aquifer Authority
- Kendall Soil & Water Conservation District
- Oaks & Prairies Joint Venture
- San Antonio River Authority
- Trinity Glen Rose Groundwater Conservation District

Non-Profit & Private Partners

- Alamo Resource Conservation & Development Area
- Bat Conservation International
- Bexar Audubon Society
- Cibolo Center for Conservation
- Cibolo Conservancy
- Comal County Conservation Alliance
- Compatible Lands Foundation
- Edwards Aquifer Conservancy
- Green Spaces Alliance
- Great Springs Project
- Greater Edwards Aquifer Alliance
- Guadalupe-Blanco River Trust
- Hill Country Alliance
- Hill Country Conservancy
- National Cave and Karst Research Institute
- San Antonio Board of Realtors
- San Antonio Chamber of Commerce
- San Antonio Hispanic Chamber of Commerce
- Texas Chapter - Society for Ecological Restoration
- Texas Chapter - International Dark Sky Association
- Texas Agricultural Land Trust
- Texas Wildlife Association
- The Nature Conservancy
- Trust for Public Land



Photo by Albert Garcia

Funding Milestones

- USDA Regional Conservation Partnership Program, \$8.57 million: **secured** for private land stewardship & conservation
- REPI Challenge: \$5.1 million: **invited** to submit a full proposal for private land stewardship and conservation



Natural Infrastructure Projects

- Structures and objectives vary
- Multiple benefits
 - reduced erosion
 - increased soil moisture and grass production
 - flood mitigation
 - groundwater replenishment
 - habitat enhancement
 - increasing the flow of spring-fed creeks





Source: JBSA



Source: Karrie King



Questions?

Daniel@hillcountryalliance.org
210-287-0478

Source: Jordan Moore