

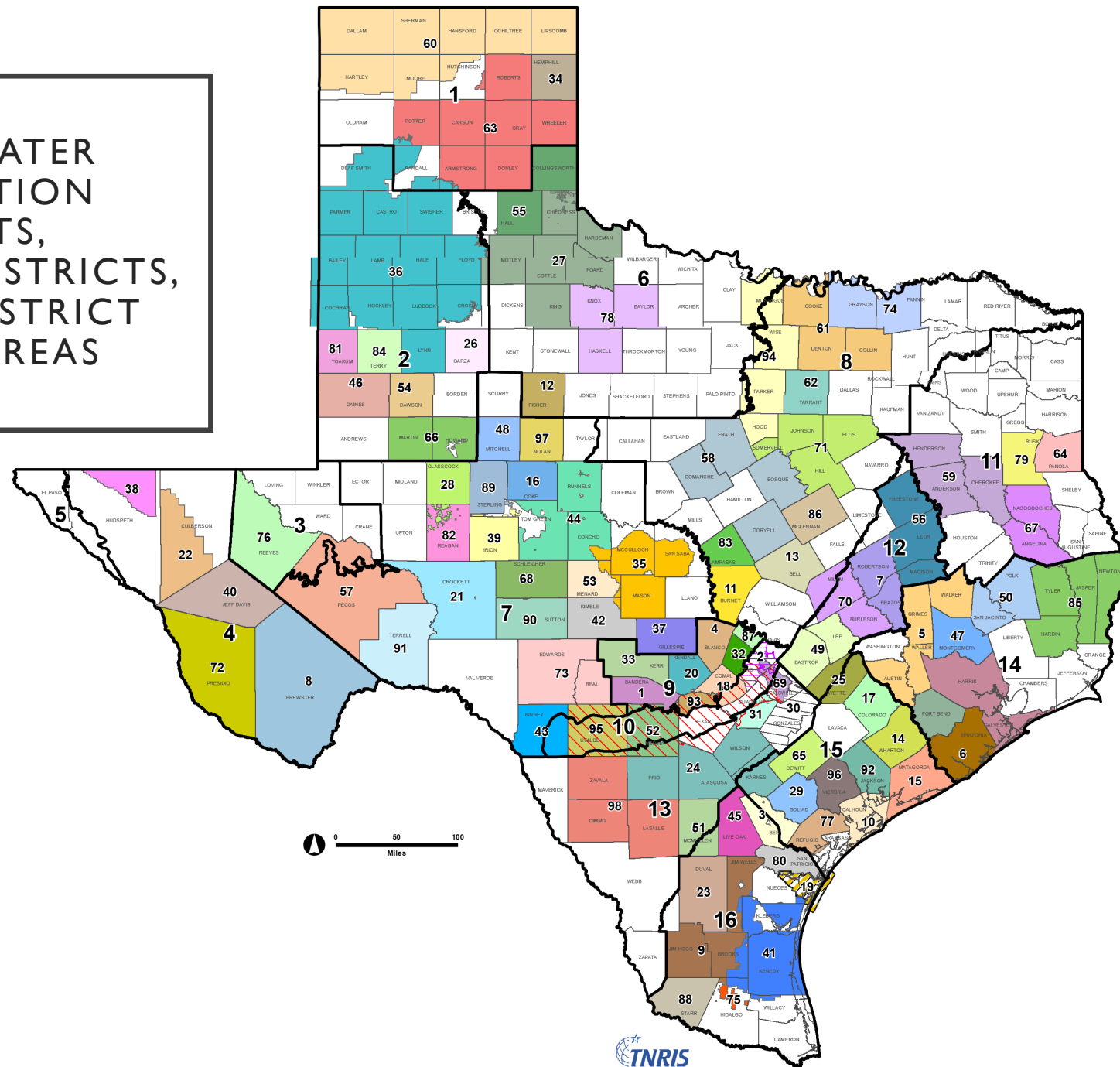
Velma R. Danielson
Senior Project Manager
Blanton & Associates, Inc.



WHEN THERE IS NO GCD: SETTING DFCS

2022 Texas Groundwater Summit
August 31, 2022

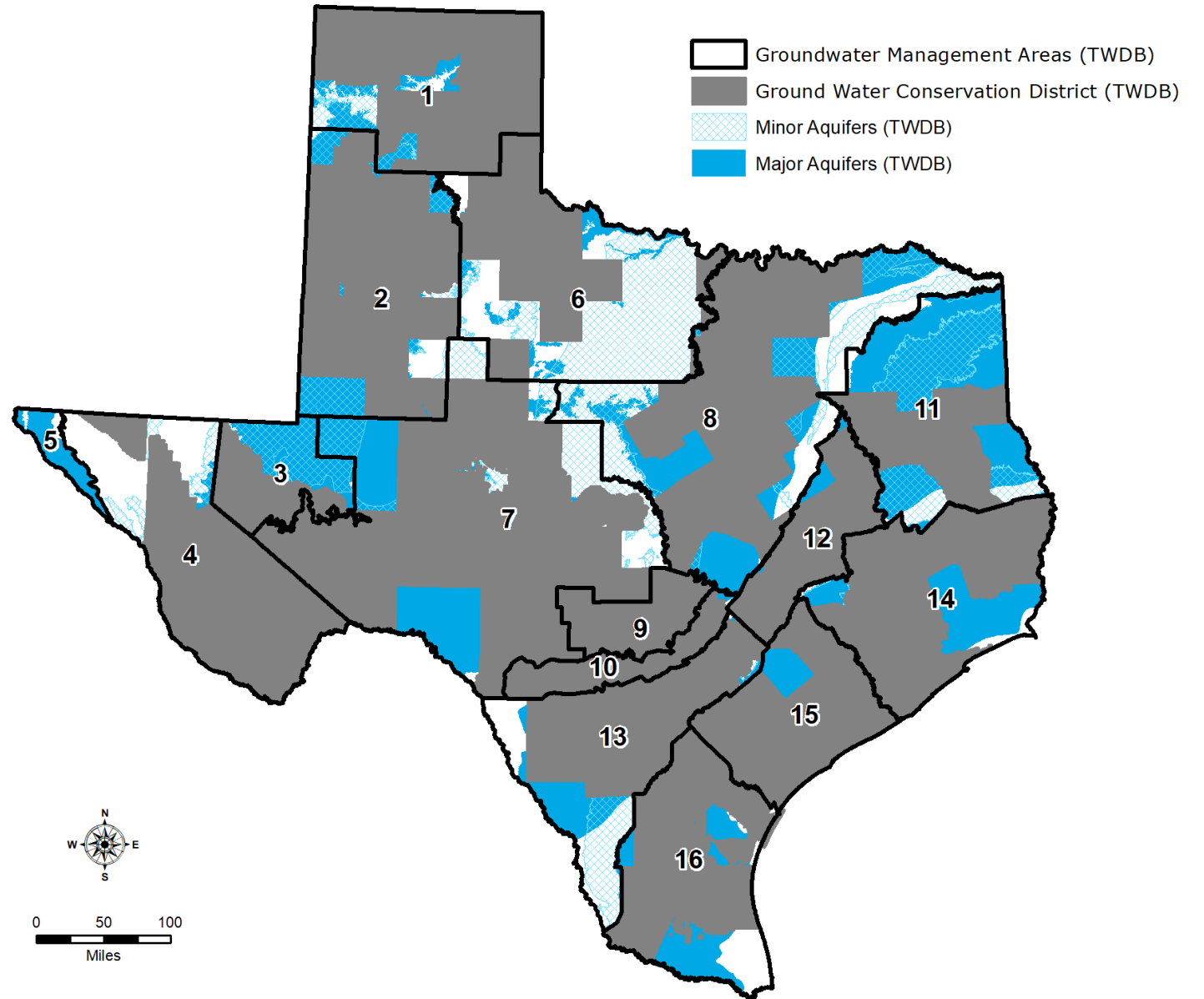
GROUNDWATER
CONSERVATION
DISTRICTS,
SUBSIDENCE DISTRICTS,
AND NON-DISTRICT
COVERED AREAS



GUIDANCE FOR
GROUNDWATER MANAGEMENT AREAS AND
GROUNDWATER CONSERVATION DISTRICTS?

- Texas Water Code Section 36.108(d) – GMAs required to establish DFCs for relevant aquifers.
- Texas Water Code Section Sec. 35.020 (PUBLIC PARTICIPATION IN GROUNDWATER MANAGEMENT PROCESS) - “It is the policy of the state to encourage public participation in the groundwater management process in areas within a groundwater management area not represented by a groundwater conservation district.”

WHY IS IT
IMPORTANT TO
HAVE NON-
DISTRICT AREAS
PARTICIPATE IN
DFC JOINT
PLANNING?

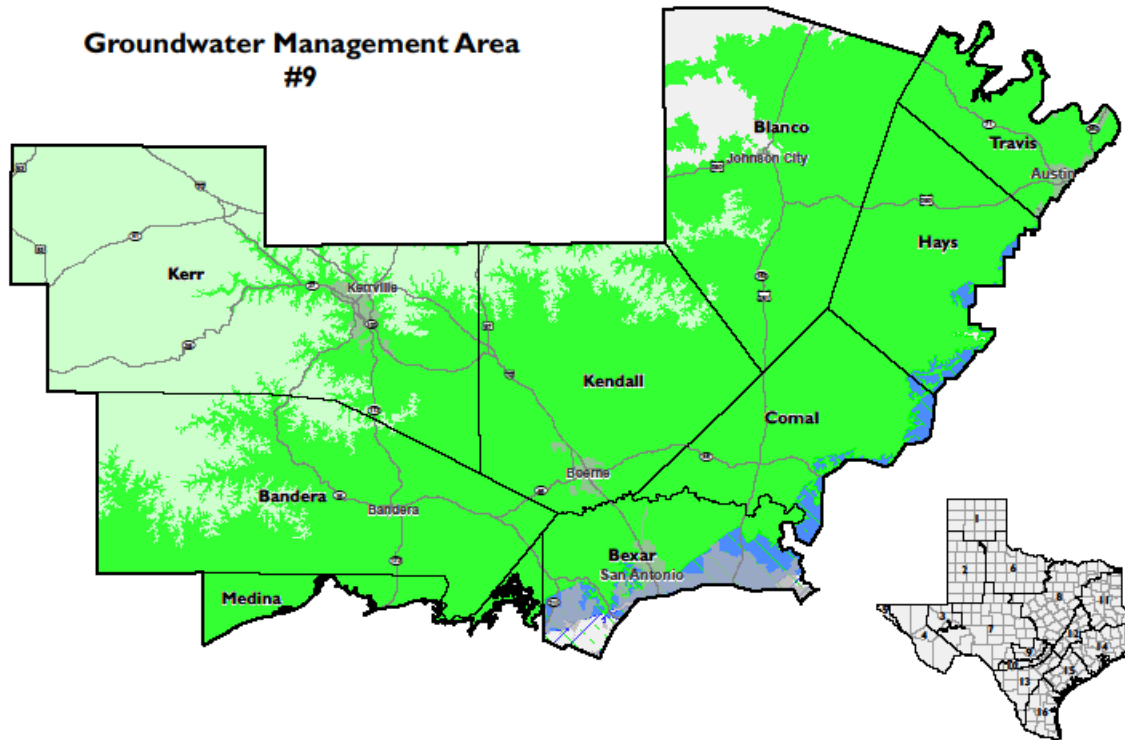


WHY IS IT IMPORTANT TO HAVE NON-DISTRICT AREAS PARTICIPATE IN DFC JOINT PLANNING?

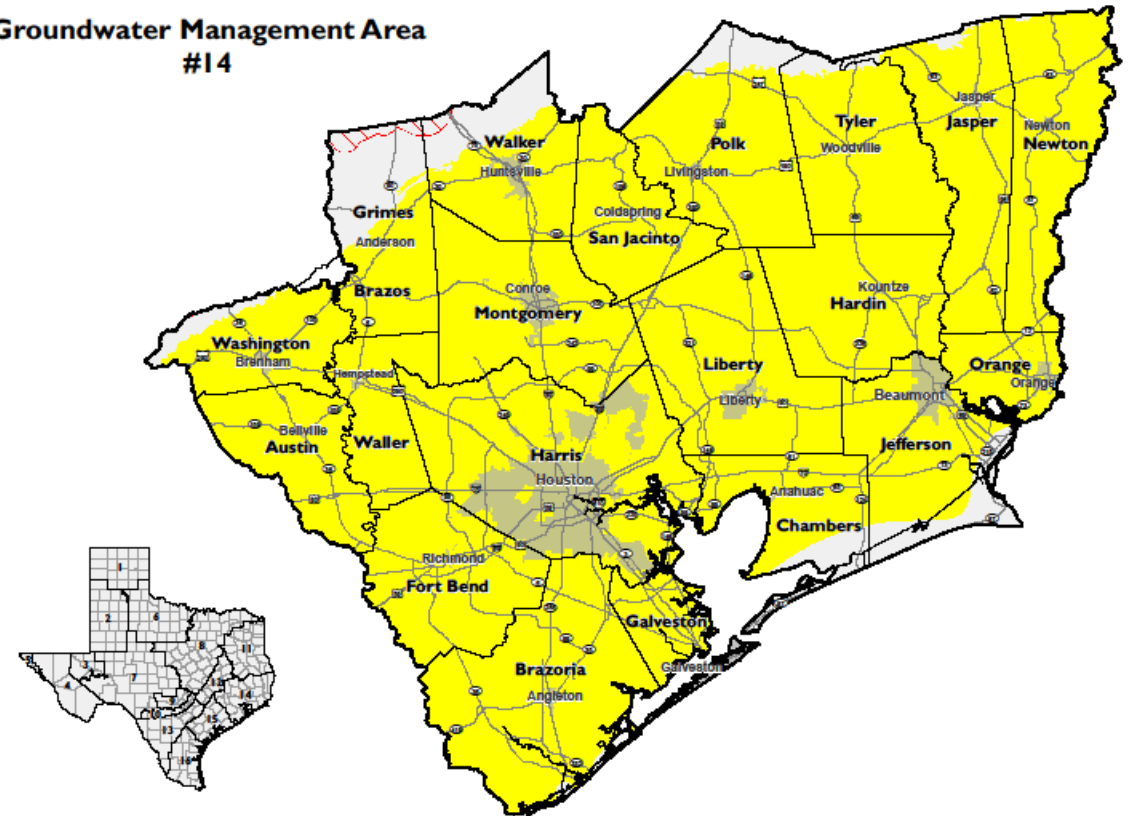
- DFC statements and MAGs reflect entire GMA and local considerations and priorities.
- Implement or achieve DFCs across GMA.
- Equitable cost sharing for planning process across GMA.
- Data and science analysis and DFC impacts on “nine factors” assessments for GMA.
- Stakeholder and public awareness and engagement.

HOW HAVE GROUNDWATER MANAGEMENT AREAS ADDRESSED PARTICIPATION BY NON-DISTRICT AREAS IN THE PROCESS?

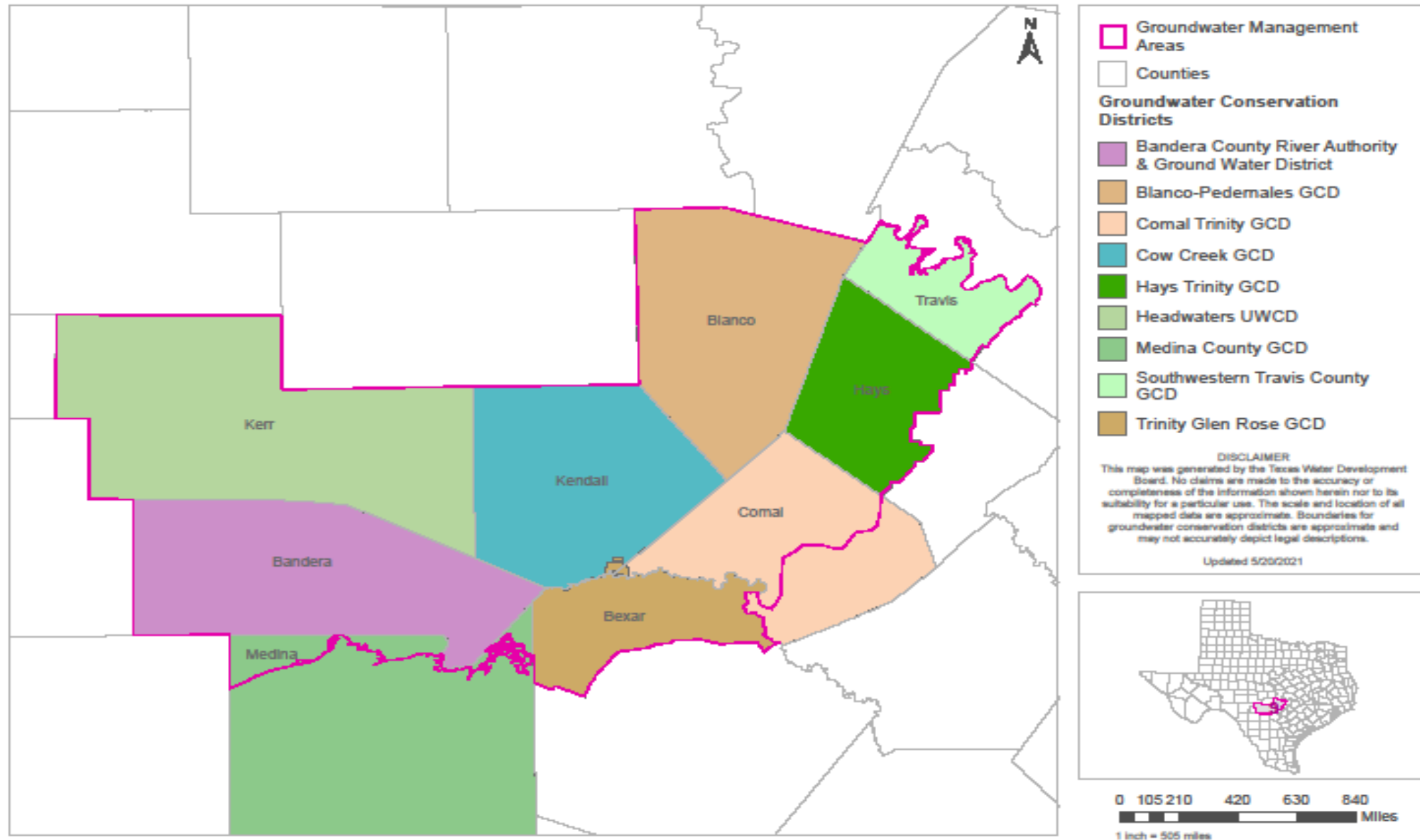
Groundwater Management Area #9



Groundwater Management Area #14



Groundwater Management Area 9



GMA 9 – 2011, 2016 DFC JOINT PLANNING CYCLES

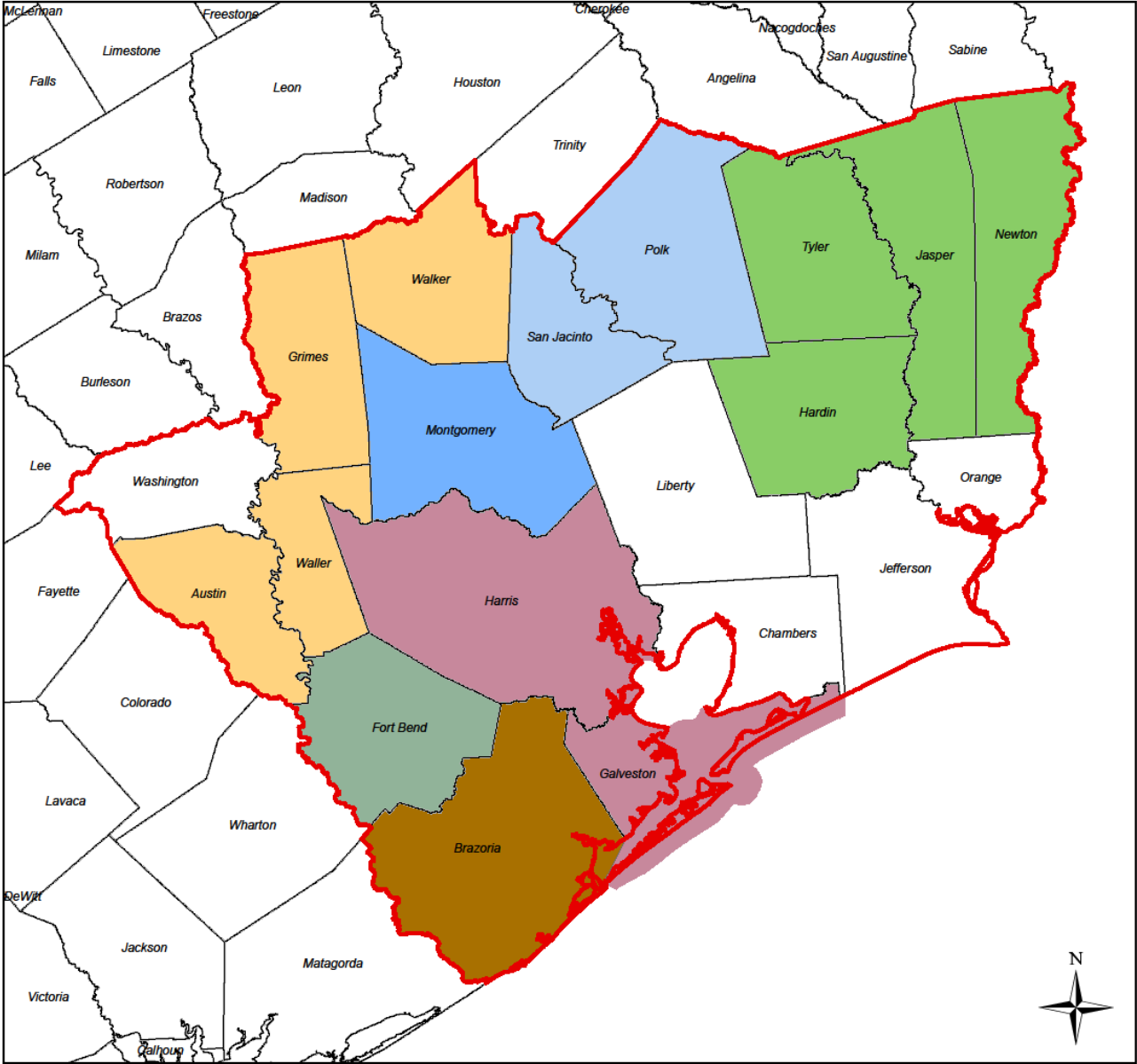
2011 DFC Joint Planning Cycle:

- Methodical process to engage and obtain public and stakeholder input.
- Technical Advisory Group met several times.
- University of Texas graduate student class project and report on GMA 9 resource management policy, water demands, population growth, and potential impacts.

2016 DFC Joint Planning Cycle:

- GCD representatives contacted county leaders in Comal and Travis counties; served as non-voting members.
- Comal Trinity GCD created in 2015; became voting member.
- GMA 9 held numerous meetings at various locations.
- Technical Advisory Group and other ad hoc committees created.
- Process and form used for public comment.
- Email list used to distribute meeting notices and materials.

Groundwater Management Area 14



MAP LEGEND

Groundwater Management Area 14

Counties

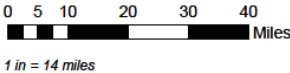
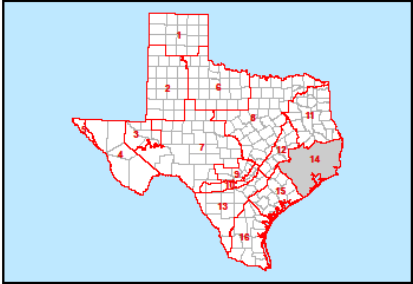
Groundwater Conservation Districts

- Bluebonnet GCD
- Brazoria County GCD
- Lone Star GCD
- Lower Trinity GCD
- Southeast Texas GCD

Subsidence Districts

- Harris-Galveston Subsidence District
- Fort Bend Subsidence District

DISCLAIMER
This map was generated by the Texas Water Development Board. No claims are made to the accuracy or completeness of the information shown herein nor to its suitability for a particular use. The scale and location of all mapped data are approximate. Boundaries for groundwater conservation districts are approximate and may not accurately depict legal descriptions.
Updated 8/26/2015



GMA 14 – 2016 AND 2021 DFC JOINT PLANNING CYCLES

2016 DFC Joint Planning:

- GCDs, Subsidence Districts, and stakeholders from Chambers and Washington counties not part of GCD, contributed to joint planning.
- Stakeholders participated in unofficial roles and provided information and data.
- GCD representatives contacted county leaders to encourage participation.
- Three counties lacked participation.

2021 DFC Joint Planning:

- Same entities signed an Interlocal Agreement for Governmental Functions and Services Related to Joint Planning in GMA 14 to share costs and expenses.

WHAT ARE SOME PRACTICES THAT COULD BE USED IN 2026 DFC JOINT PLANNING CYCLE?

- Consider types of roles on GMA for areas not in GCDs; reach out to county officials.
- Hold public forum early to help county stakeholders and public better understand importance of setting DFCs.
- Hold public input meetings before planning begins.
- For planning process, consider how information will be shared with stakeholders and public.
- For planning process, consider how non-district areas relate to technical analysis and discussions about nine factors.
- For ER, include discussion about non-district areas.

THANK YOU!

Velma R. Danielson

Senior Project Manager

Blanton & Associates, Inc.

velma.danielson@blantonassociates.com

(210) 854-9374 (mobile no.)

